



# Recommendations for vehicles with a hydraulic platform

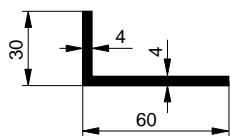


In order to extend the service life (mainly the hydraulic platform seal), we recommend using a suitable securing/guiding of the hydraulic platform on the rear pillars.

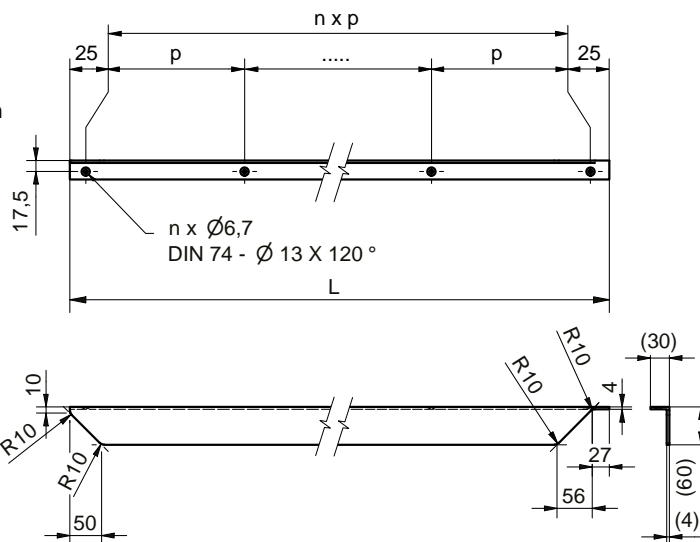
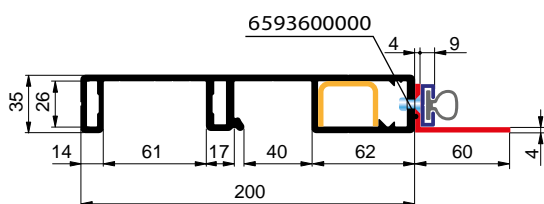
For example:

### L profile (F1001E0161) for the entire height of the platform

- Improves tightness
- Protects the seal from mechanical damage during loading
- It is necessary for a tarpaulin flap
- Increases the strength of the rear pillar



|                    |             |   |
|--------------------|-------------|---|
| <b>F1001E0161</b>  | <b>anod</b> |   |
| <b>L 60x30x4mm</b> |             |   |
| EN AW 6060         | 0,90 kg     | m |

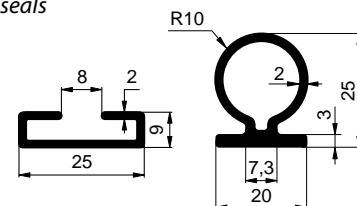


**6612013701 (anod) / 6600013701 (al):**

Anodized profile for flap seals

**1001002025 (EPDM):**

Seal omega 20x25mm

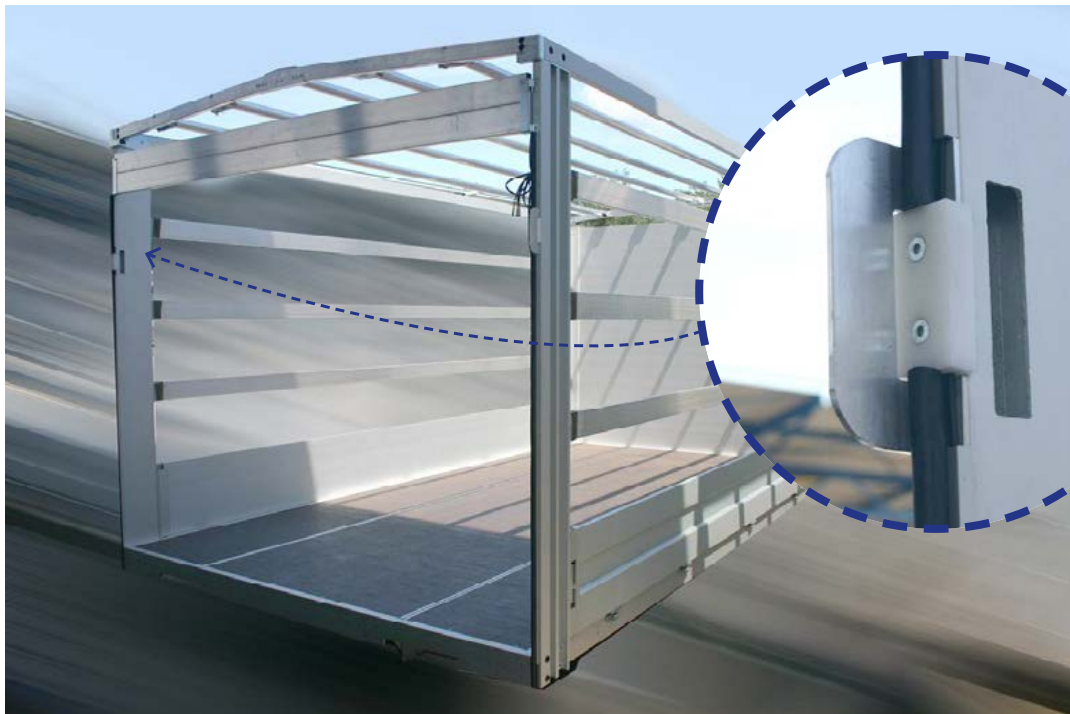


Subject to technical changes.

**Other options for securing**



*Individual aluminium guide plates*



*Small L profil with plastic stop*



*Steel lead plates*