



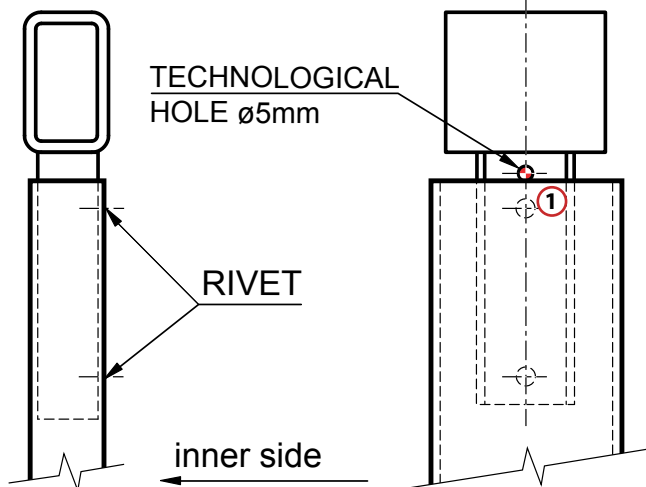
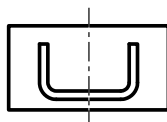
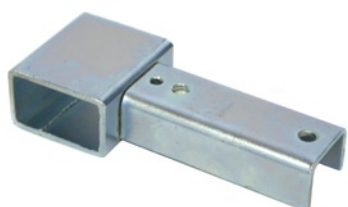
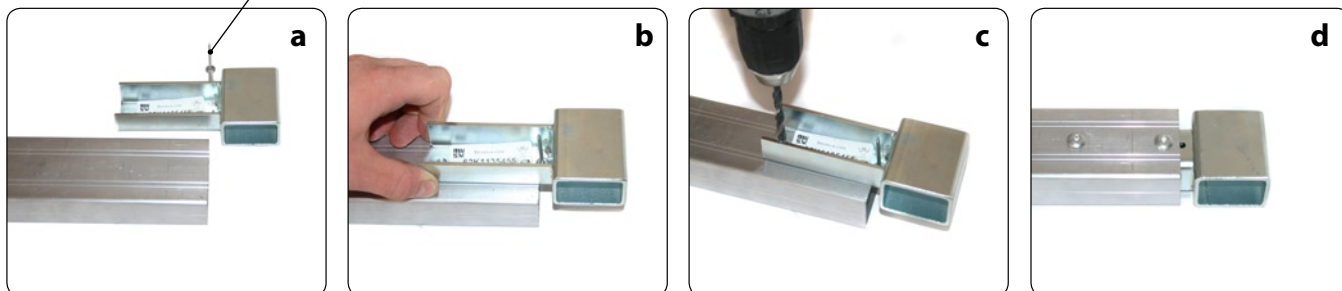
Mounting the ALUGRIP attachment

Purpose of the information:

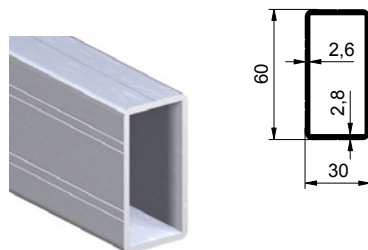
For the correct installation and functionality of the ALUGRIP pilars, it is necessary to follow the instructions given in the installation instructions, see below.

ContentTI:

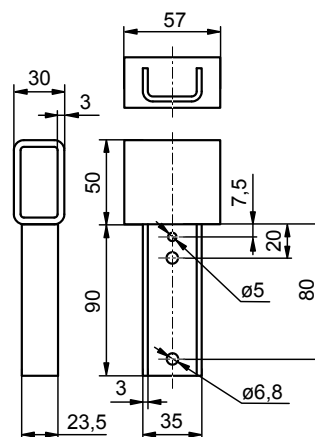
As a spacer use for example M5 screw or rivet 4,8mm.



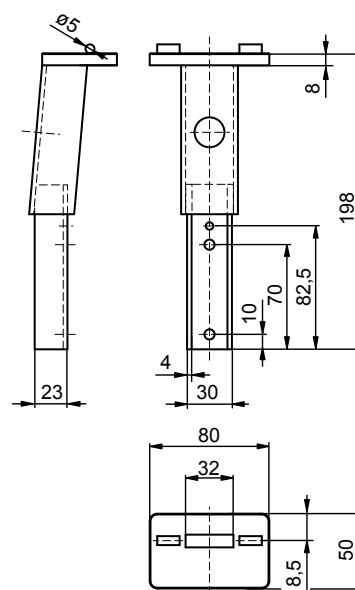
Picture 01 Mounting the attachment to the profile 6600012891



Picture 04 6600012891 Profile 60x30x2,6



Picture 02 62K1135455 ALUGRIP head top2



Picture 03 62K1135456 ALUGRIP head S2 attachment

Note:

The assembly is identical for the S2 head attachments.